

PSAT™ 10

Understanding Scores

UPDATED WITH ANSWER KEY
AND SCORE CONVERSIONS

APRIL 1–26, 2019



Contact Us

About College Board

College Board is a mission-driven not-for-profit organization that connects students to college success and opportunity. Founded in 1900, College Board was created to expand access to higher education. Today, College Board's membership is made up of over 6,000 of the world's leading educational institutions and is dedicated to promoting excellence and equity in education. Each year, College Board helps more than seven million students prepare for a successful transition to college through programs and services in college readiness and college success—including the SAT® and the Advanced Placement Program®. The organization also serves the education community through research and advocacy on behalf of students, educators, and schools. For further information, visit collegeboard.org.

About the PSAT 10

As one of the assessments in College Board's SAT Suite of Assessments, the PSAT™ 10 is designed to measure the skills and knowledge that current research shows are essential for college and career readiness and success. The PSAT 10 covers the same content areas as the PSAT/NMSQT®. Both the PSAT/NMSQT and the PSAT 10 serve as a check-in on student progress to help pinpoint areas for development. Educational Testing Service (ETS) administers the PSAT 10 for College Board.

CONTACTS FOR STUDENTS AND PARENTS

📧 psathelp@info.collegeboard.org

📞 866-433-7728
+1-212-713-8105 (International)
8 a.m. to 7 p.m. ET, Mon.–Fri.

GENERAL CONTACTS

✉ PSAT 10
P.O. Box 6720
Princeton, NJ 08541-6720

CONTACTS FOR EDUCATORS

📧 psat10@info.collegeboard.org

📞 888-477-PSAT (7728)
+1-212-237-1335 (International)
8 a.m.–8 p.m. ET, Mon.–Fri.

The **PSAT 10** and the **SAT Suite** of Assessments

The SAT Suite of Assessments

The SAT® Suite of Assessments is an integrated system of tests that includes the SAT (for students in grades 11 and 12), the PSAT/NMSQT® (for grades 10 and 11), the PSAT™ 10 (for grade 10), and the PSAT™ 8/9 (for grades 8 and 9).

The tests measure the same skills and knowledge in grade-appropriate ways. They work together to show college readiness over time so educators, students, and parents can monitor student progress. Their content reflects the kind of meaningful, engaging, and challenging work that students find in the best middle school and high school courses taught today.

What the PSAT 10 Measures

The PSAT 10 measures the skills and knowledge that research shows are the most important for success in college and career. The Reading Test measures comprehension and reasoning skills and focuses on close reading of passages in a wide array of subject areas. The Writing and Language Test measures a range of skills, including command of evidence, expression of ideas, and the use of standard English conventions in grammar and punctuation. The Math Test covers a range of math practices, with an emphasis on problem solving, modeling, using tools strategically, and using algebraic structure.

How the PSAT 10 Is Scored

Students receive a total score that is the sum of their scores on the two sections (Evidence-Based Reading and Writing and Math).

To calculate section scores, we first compute the student's raw score—the number of questions correctly answered—for each section. Nothing is deducted for incorrect answers or for unanswered questions.

Next, we convert each of the raw section scores to a scaled score of 160 to 760. This conversion process adjusts for slight differences in difficulty among versions of the test and provides a score that is consistent across different versions. The scaled scores are the scores provided on score reports.

How You Can Use the Student Score Report

The student score report clearly summarizes a student's current achievement levels and encourages next steps to increase college and career readiness. You can help students by going over their score reports and helping them understand what their scores mean. Here's how.

TALK WITH STUDENTS ABOUT COLLEGE READINESS

For each section, the score report includes an indicator that shows whether the student's score meets the grade-level benchmark. These benchmarks allow students and educators to understand how students are progressing toward college readiness.

- If a student is meeting the benchmark for a section, remind them to continue to take rigorous courses and work hard to stay on track for college success.
- If a student is not meeting the benchmark for a section, connect them to classroom work that is focused on areas that need improvement. Khan Academy® can help supplement this work.

USE STUDENT SCORES TO IDENTIFY STRENGTHS AND WEAKNESSES

- Use test scores, as well as the cross-test scores and subscores online, to evaluate a student’s relative strengths and weaknesses and to determine which skills need practice.
- Use the red/yellow/green coding on section scores to evaluate how your student is performing relative to other students who are meeting or exceeding the benchmark.
 - ◆ Highlight the areas in green as the student’s strengths.
 - ◆ Prioritize areas in the red range for additional work and practice.

HELP STUDENTS DECIDE ON NEXT STEPS

- Work with your students to think of ways to develop each of the skills you have identified for focus and improvement.
- Encourage students to go online for more details and to link their College Board account to Khan Academy for a free, personalized study plan.

For further guidance on interpreting score reports, see the Professional Development modules for K–12 educators at sat.org/educators.

Score-Reporting Features

On pages 12–13 of this booklet, you’ll find an annotated sample score report that includes detailed explanations of the information that students receive about their college readiness skills. Students can access their online reports to obtain more information and guidance, including free, personalized Khan Academy instruction and practice based on their results.

The online reporting portal at k12reports.collegeboard.org offers you an array of powerful tools to assess your students’ progress and plan instruction that delivers what they need. The tools include:

- Flexible reports that can be sorted and filtered by key demographics.
- Instructional planning support using test subscores in specific content areas, benchmarks, information for cross-subject tasks, and data for prescribing interventions when students are behind or ahead.
- Question Analysis Report that helps educators connect subscores to state standards, analyze students’ strengths and weaknesses, learn which mistakes were the most common, and look for opportunities to reinforce skills. (The Question Analysis Report won’t be available to schools testing in February or March.)
- Access to the AP Potential™ tool to pinpoint students who are likely to succeed in more challenging courses.

PSAT 10

Scores

Total Scores

ONLINE AND PAPER SCORE REPORTS

The total score is the sum of the two section scores; its range is 320–1520.

Section Scores

ONLINE AND PAPER SCORE REPORTS

Your students receive scores in the range of 160–760 for each of two sections. The Evidence-Based Reading and Writing section score combines the scores for the Reading Test and the Writing and Language Test. The Math section score is derived from the Math Test score, including the calculator and no-calculator portions.

Test Scores

ONLINE AND PAPER SCORE REPORTS

The range for the following test scores is 8–38:

- Reading
- Writing and Language
- Math

Cross-Test Scores

ONLINE SCORE REPORT ONLY

The range for cross-test scores is also 8–38. These scores represent student performance on select questions across the three tests and show a student's strengths in the following domains:

- Analysis in History/Social Studies
- Analysis in Science

Subscores

ONLINE SCORE REPORT ONLY

Subscores in the range of 1–15 offer feedback on student performance in the following skill areas:

- Command of Evidence
- Words in Context
- Expression of Ideas
- Standard English Conventions
- Heart of Algebra
- Problem Solving and Data Analysis
- Passport to Advanced Math

Score Ranges

ONLINE SCORE REPORT ONLY

A student's ability is better represented by score ranges than points. Score ranges are derived from the standard error of measurement and show how much a student's scores would likely vary if they took a different administration of the test under identical conditions.

From recent administrations of the PSAT 10, these ranges are approximately:

- Total: ± 40 points
- Section: ± 30 points
- Test scores, subscores, and cross-test scores: ± 2 points

Score Scales and Score Changes

Using PSAT 10 Scores to Project SAT Scores

The SAT Suite—from the PSAT 8/9 through the SAT—uses a common score scale for the total, section, test, and cross-test scores. The ranges reported for each assessment reflect grade-level appropriateness within the common scale. Thus, while the total range for the SAT is 400–1600, the total range for the PSAT 10 is 320–1520.

This common score scale means that a student who took the PSAT 10 and received a Math section score of 500 would be expected to also get a 500 on the SAT or the PSAT 8/9 if they had taken either of those tests on that same day; a score of 500 represents the same level of academic achievement on all three assessments.

This also means that student growth across the SAT Suite is easy to determine. If a student takes the PSAT 10 this year and receives a 500 Math section score, and then takes the SAT next year and earns a 550 Math section score, that student has shown a growth of 50 points, which likely resulted from hard work both in and out of school.

The total, section, test, and cross-test scores have been vertically scaled to allow the accurate measurement of growth from test to test. Encourage students to focus on the section scores if they are curious about the growth they can expect to see in their scores over the next year. They should look at the set of projected score ranges we have provided (only in online score reports) for students that reflect typical growth. Of course, a student's individual growth will be shaped by the courses taken and by the practice the student undertakes between assessments.

Subscores (available online only) aren't on a vertical scale, and therefore comparing performance year after year should be based on relative performance rather than by calculating student growth across tests.

Students who wish to improve their performance on the SAT should follow these guidelines:

- Develop academic skills through challenging coursework.
- Read extensively and develop strong writing skills.
- Engage in deliberate practice in the three math areas that are emphasized the most in the assessments.
- Take practice tests and upload their results to Khan Academy for free, personalized practice of the skills they need to improve. To learn more, go to psat.org/practice.

Benchmarks and Red/Yellow/Green Performance

The PSAT 10 Grade-Level Benchmarks

The SAT Suite offers grade-level benchmarks that can be used to gauge whether students are on track for becoming college ready each year in grades 8–12. Grade-level benchmarks represent the section scores on each assessment that students should meet or exceed to be considered on track to be college ready.

The PSAT 10 reports benchmarks for 10th graders to help them understand their level of readiness for college and career training programs. The benchmarks help educators better understand how many students and also which students are on track to have the skills necessary for college-entry, credit-bearing courses. Equipped with this information, educators can support students who need extra help while there is still time for improvement. Teachers can also accelerate the progress of students who meet or exceed the benchmarks.

RECOMMENDED USES

Grade-level benchmarks can help educators:

- Identify students who are on track for success in college and career readiness.
- Identify students who may need extra support while there is still time for improvement.
- Find students who may be ready for more challenging coursework.

Grade-level benchmarks shouldn't be used to assign academic tracks, to discourage students from pursuing college, or to keep students from participating in challenging courses. Rather, the benchmarks are intended to help **all** students better prepare for life after high school.

What the Benchmarks Mean

The College and Career Readiness Benchmarks for the current SAT predict a 75% likelihood of achieving a C or higher in related first-semester, credit-bearing college courses. The benchmarks are set at the section level, so there is a benchmark for Evidence-Based Reading and Writing and a benchmark for Math.

Score reports for the PSAT/NMSQT, PSAT 10, and PSAT 8/9 include grade-level benchmarks based on how students grow from year to year toward the SAT benchmarks.

PSAT 10 Grade-Level Benchmarks		
	Evidence-Based Reading and Writing	Math
10th Grade PSAT 10	430	480

Additional Information Provided to Help You Understand Progress Toward College Readiness

The student score report provides further context for understanding scores by showing a color-coded bar chart for the section scores. Students who met or exceeded the benchmark will be in the green portion of the score band. If students didn't meet the benchmark but were close (within one year's growth), their scores will be in the yellow portion. Students who have a score indicating more than a year's growth below the grade-level benchmark will have a score in the red portion of the score band. Additionally, for each of the test scores and subscores, we have provided a color-coded guide to a student's relative strengths (green) and weaknesses (red).

Percentiles

A student's percentile rank represents the percentage of students who score equal to or lower than their score. For example, if a student's score is in the 75th percentile, 75% of a comparison group achieved scores at or below that student's score. Two types of percentile ranks, comparing student scores to two different reference populations, are provided in this publication for both total and section scores.

Nationally representative percentiles are derived from a research study of U.S. students in the 10th grade and are weighted to represent all U.S. students in that grade, regardless of whether they typically take the PSAT 10.

User group percentiles are based on the actual scores of students who took the PSAT/NMSQT and the PSAT 10 in the past three school years.

Percentiles for Total Scores

10 TH GRADE		
Total Score	PERCENTILES	
	Nationally Representative Sample	PSAT/NMSQT and PSAT 10 User
1520	99+	99+
1510	99+	99+
1500	99+	99+
1490	99+	99+
1480	99+	99+
1470	99+	99+
1460	99+	99+
1450	99+	99+
1440	99+	99+
1430	99+	99
1420	99	99
1410	99	99
1400	99	99
1390	99	99
1380	99	99
1370	99	99
1360	99	98
1350	98	98
1340	98	98
1330	98	98
1320	98	98
1310	97	97
1300	97	97
1290	97	97
1280	97	96
1270	96	96
1260	96	95
1250	95	95
1240	95	94
1230	94	94
1220	94	93
1210	93	93
1200	92	92
1190	91	91
1180	91	90
1170	90	89
1160	89	88
1150	88	87
1140	87	86
1130	86	85
1120	84	84
1110	83	83

Percentiles for Total Scores (continued)

10 TH GRADE		
Total Score	PERCENTILES	
	Nationally Representative Sample	PSAT/NMSQT and PSAT 10 User
1100	82	81
1090	81	80
1080	79	78
1070	78	77
1060	76	76
1050	75	74
1040	73	72
1030	71	71
1020	69	69
1010	67	67
1000	65	66
990	63	64
980	62	62
970	60	60
960	58	58
950	56	56
940	54	54
930	52	53
920	50	51
910	48	49
900	46	47
890	44	45
880	42	43
870	40	41
860	38	38
850	36	36
840	33	34
830	31	32
820	28	30
810	26	28
800	24	26
790	22	24
780	19	22
770	17	20
760	15	18
750	13	16
740	11	14
730	9	12
720	8	10
710	6	9
700	5	7
690	4	6

10 TH GRADE		
Total Score	PERCENTILES	
	Nationally Representative Sample	PSAT/NMSQT and PSAT 10 User
680	3	5
670	2	4
660	2	4
650	1	3
640	1	2
630	1	2
620	1	2
610	1-	1
600	1-	1
590	1-	1
580	1-	1
570	1-	1
560	1-	1
550	1-	1
540	1-	1-
530	1-	1-
520	1-	1-
510	1-	1-
500	1-	1-
490	1-	1-
480	1-	1-
470	1-	1-
460	1-	1-
450	1-	1-
440	1-	1-
430	1-	1-
420	1-	1-
410	1-	1-
400	1-	1-
390	1-	1-
380	1-	1-
370	1-	1-
360	1-	1-
350	1-	1-
340	1-	1-
330	1-	1-
320	1-	1-
Mean Score	939	934
Standard Deviation	170	180

Percentiles for Section Scores

10 TH GRADE				
Evidence-Based Reading and Writing			Math	
Section Score	PERCENTILES		PERCENTILES	
	Nationally Representative Sample	PSAT/NMSQT and PSAT 10 User	Nationally Representative Sample	PSAT/NMSQT and PSAT 10 User
760	99+	99+	99+	99+
750	99+	99+	99+	99+
740	99+	99+	99+	99
730	99+	99+	99	99
720	99+	99+	99	99
710	99	99	99	99
700	99	99	99	98
690	99	98	98	98
680	98	98	98	98
670	98	97	97	97
660	97	97	97	97
650	97	96	96	97
640	96	95	96	96
630	95	94	95	95
620	93	92	95	95
610	92	91	94	94
600	90	89	92	92
590	89	87	91	91
580	87	85	89	89
570	85	83	86	87
560	82	80	84	85
550	79	78	82	82
540	76	75	79	80
530	73	72	76	77
520	70	68	72	74
510	66	65	69	71
500	63	62	66	68
490	59	59	62	64
480	56	55	57	60
470	53	52	52	56
460	49	49	49	52
450	46	45	46	48

Percentiles for Section Scores (continued)

10 TH GRADE				
Evidence-Based Reading and Writing			Math	
Section Score	PERCENTILES		PERCENTILES	
	Nationally Representative Sample	PSAT/NMSQT and PSAT 10 User	Nationally Representative Sample	PSAT/NMSQT and PSAT 10 User
440	43	42	40	43
430	39	39	36	39
420	36	35	31	35
410	32	32	26	30
400	28	28	23	26
390	24	25	19	21
380	21	21	15	17
370	17	17	12	14
360	13	14	10	11
350	10	11	7	8
340	7	8	5	6
330	5	6	3	5
320	3	4	2	4
310	2	3	2	3
300	1	2	1	2
290	1-	1	1	2
280	1-	1	1-	1
270	1-	1	1-	1
260	1-	1	1-	1
250	1-	1-	1-	1
240	1-	1-	1-	1
230	1-	1-	1-	1-
220	1-	1-	1-	1-
210	1-	1-	1-	1-
200	1-	1-	1-	1-
190	1-	1-	1-	1-
180	1-	1-	1-	1-
170	1-	1-	1-	1-
160	1-	1-	1-	1-
Mean Score	468	470	470	464
Standard Deviation	94	99	88	93

Answer Key

April 1–26, Test Form

Reading Test	
SECTION 1	
1	D
2	C
3	A
4	B
5	D
6	B
7	A
8	D
9	C
10	A
11	C
12	D
13	A
14	D
15	B
16	C
17	B
18	A
19	D
20	B
21	B
22	D
23	A
24	C
25	B
26	C
27	A
28	C
29	B
30	A
31	D
32	B
33	A
34	D
35	B
36	C
37	C
38	C
39	B
40	A
41	B
42	D
43	A
44	D
45	C
46	C
47	D

Writing and Language Test	
SECTION 2	
1	A
2	D
3	D
4	C
5	B
6	A
7	D
8	C
9	C
10	A
11	D
12	B
13	B
14	D
15	B
16	A
17	B
18	D
19	C
20	C
21	A
22	D
23	C
24	B
25	A
26	B
27	D
28	D
29	C
30	B
31	C
32	C
33	A
34	B
35	D
36	B
37	B
38	D
39	A
40	B
41	A
42	C
43	D
44	C

Math Test – No Calculator	
SECTION 3	
1	D
2	B
3	A
4	D
5	B
6	A
7	A
8	C
9	D
10	D
11	C
12	A
13	B
14	400
15	6
16	2, 12
17	20

Math Test – Calculator	
SECTION 4	
1	B
2	D
3	A
4	A
5	D
6	C
7	B
8	D
9	A
10	C
11	C
12	A
13	A
14	C
15	B
16	A
17	C
18	D
19	C
20	C
21	C
22	A
23	C
24	D
25	A
26	B
27	D
28	5
29	6
30	42
31	17

NOTE: For more detailed information about scores, visit psat.org/resources.

Score Conversion

Score conversions shows how raw scores are converted into test scores, cross-test scores, and subscores.

IMPORTANT TO NOTE

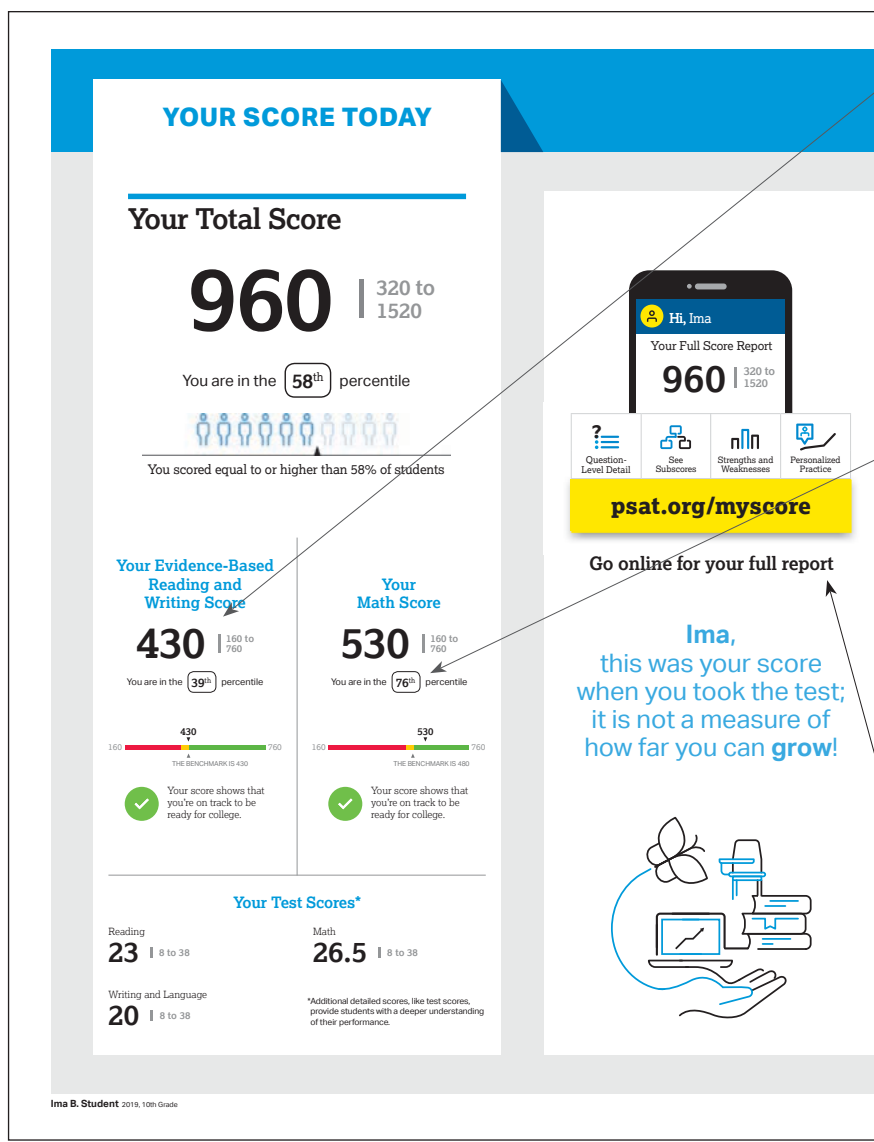
- The section score for the Evidence-Based Reading and Writing section is calculated by adding the Reading Test score to the Writing and Language Test score and multiplying that figure by 10.
- The section score for the Math section is calculated by multiplying the Math Test score by 20.
- The digital Reading Test conversion is adjusted for mode differences, based on comparability studies. As we continue to administer the SAT Suite digitally, College Board will monitor performance and make needed adjustments to achieve comparable scale scores across testing modes.

Raw Score (# of correct answers)	Reading Test Score (Paper and Pencil)	Reading Test Score (Digital)	Writing and Language Test Score (Paper and Pencil/Digital)	Math Test Score (Paper and Pencil/Digital)
48				38
47	38	38		37.5
46	36	35		36.5
45	35	34		35.5
44	34	34	38	34
43	34	33	36	32.5
42	33	32	35	31.5
41	32	31	34	31
40	31	30	33	30
39	30	29	32	29.5
38	29	29	32	29
37	29	28	31	28.5
36	28	28	30	28
35	28	27	30	27.5
34	27	27	29	27
33	27	26	29	27
32	26	26	28	26.5
31	26	25	27	26
30	26	25	27	25.5
29	25	25	26	25.5
28	25	24	26	25
27	24	24	25	24.5
26	24	23	25	24
25	23	23	24	24
24	23	22	23	23.5
23	22	22	23	23
22	22	21	22	23
21	21	21	21	22.5
20	21	20	21	22
19	20	20	20	22
18	20	19	20	21.5
17	19	19	19	21
16	19	18	18	20.5
15	18	18	18	20
14	18	17	17	19.5
13	17	17	17	19
12	17	16	16	18.5
11	17	16	16	18
10	16	15	15	17.5
9	16	14	15	16.5
8	15	14	14	16
7	15	13	14	15
6	14	12	13	14
5	13	11	12	13
4	12	11	12	12
3	11	10	11	11
2	10	9	10	10
1	9	8	9	9
0	8	8	8	8

The PSAT 10 Score Report

A Case Study: Ima B. Student's PSAT 10 Score Report

Take a look at Ima B. Student's sample score report below and on the next page. Use the corresponding information to help you interpret your student's PSAT 10 Score Report.



What are Ima's scores?

Ima's Evidence-Based Reading and Writing score is 430, and her Math score is 530. In Evidence-Based Reading and Writing, Ima's score meets the benchmark for college readiness. In Math, however, Ima is exceeding the benchmark and is on track. Test scores, cross-test scores, and subscores can give Ima a better understanding of areas to work on.

What are Ima's score percentiles?

Since Ima is in the 10th grade, the percentiles compare her scores with those of all 10th graders in the nation. Ima scored as well as or better in Evidence-Based Reading and Writing than 39% of a nationally representative group of sophomores. In Math, she scored as well as or better than 76% of a nationally representative group of sophomores. Additional percentiles are available in Ima's online score report.

How can Ima see her full report?

Ima can visit psat.org/myscore to see her full score report, learn how to prepare for the SAT, and see her potential for AP® coursework.

Score Report

YOUR PATH TOMORROW

Here's what else is waiting for you online:

- 1

A link to free personalized practice on Khan Academy
Share your scores with Khan Academy to get your personalized practice.
- 2

A list of the challenging courses you're ready for
Congrats! Your scores show you're ready to succeed in AP® courses.
- 3

Your customized starter college list
Check out the tools at BigFuture™ to kick-start your college plans.

Money for College

Our PSAT 10 scholarship partners award over \$255 million a year and they're on the lookout for qualified students.

If you said "yes" to Student Search Service® on your PSAT 10 answer sheet, you could be invited to apply for one of their college scholarships.

If you didn't, it's not too late to opt in.

Learn more about each scholarship program and find out how to opt in at psat.org/scholarships.

+\$255 Million
IN COLLEGE SCHOLARSHIPS

© 2019 The College Board. College Board, AP, SAT and the acorn logo are registered trademarks of the College Board. SAT is a service mark of the College Board. PSAT/10 is a registered trademark of the College Board and National Board Scholastic Corporation. Visit the College Board on the web: collegeboard.org. Khan Academy is a registered trademark of Khan Academy and its affiliates.

What are Ima's next steps?

When Ima accesses her full score report at psat.org/myscore, she'll also be able to connect to free, personalized practice on Khan Academy, see her potential for AP coursework, and use the college- and career-planning resources at BigFuture™.

Score Report

How can Ima learn from her answers?

Using her score report with her PSAT 10 test booklet, Ima can see the actual questions, correct answers, and difficulty level alongside her own answers. She can use her online score report to review the questions she answered incorrectly or omitted, and to see detailed answer explanations.

Your Question-Level Feedback

QUESTIONS OVERVIEW

Section	Total Questions	Correct Answers	Incorrect Answers	Omitted Answers
READING	47	21	25	1
WRITING AND LANGUAGE	44	17	26	1
MATH – CALCULATOR	31	15	14	2
MATH – NO CALCULATOR	17	10	7	0

*Tip: A great way to start improving: check out the easy questions you missed first.

KEY

- ✓ Correct
- Omitted
- U Unscorable
- X Multi-Grid/Incorrect
- Easy Question
- Medium Question
- Hard Question
- Easy Question Master*

READING				WRITING AND LANGUAGE				MATH – CALCULATOR			
Question #	Correct	Your Answer	Difficulty	Question #	Correct	Your Answer	Difficulty	Question #	Correct	Your Answer	Difficulty
1	A	✓	●	1	D	○	■	1	B	○	■
2	B	✓	■	2	B	✓	■	2	A	○	■
3	B	✓	■	3	C	D	■	3	B	○	■
4	B	A	■	4	C	A	■	4	D	○	■
5	C	✓	■	5	B	D	■	5	B	C	■
6	D	✓	■	6	B	X	■	6	A	○	■
7	B	✓	■	7	A	D	■	7	B	○	■
8	A	✓	■	8	B	C	■	8	C	B	■
9	D	✓	■	9	A	B	■	9	A	○	■
10	A	✓	■	10	D	○	■	10	D	C	■
11	D	C	■	11	D	○	■	11	D	○	■
12	D	B	■	12	B	✓	■	12	A	○	■
13	D	A	■	13	C	✓	■	13	B	○	■
14	A	X	■	14	C	B	■	14	C	○	■
15	C	B	■	15	D	○	■				
16	B	C	■	16	B	A	■				
17	D	C	■	17	B	D	■				
18	B	D	■	18	A	✓	■				
19	A	✓	■	19	B	✓	■				
20	C	✓	■	20	C	D	■				
21	B	D	■	21	A	✓	■				
22	D	✓	■	22	A	B	■				
23	B	D	■	23	C	B	■				
24	D	✓	■	24	D	C	■				
25	C	✓	■	25	C	D	■				
26	B	A	■	26	A	✓	■				
27	B	C	■	27	A	D	■				
28	A	C	■	28	B	✓	■				
29	D	A	■	29	D	A	■				
30	B	A	■	30	C	B	■				
31	D	✓	■	31	D	✓	■				
32	A	✓	■	32	B	✓	■				
33	C	✓	■	33	D	✓	■				
34	A	B	■	34	D	B	■				
35	A	B	■	35	D	✓	■				
36	C	○	■	36	B	A	■				
37	B	C	■	37	C	D	■				
38	C	D	■	38	A	✓	■				
39	C	✓	■	39	C	✓	■				
40	C	✓	■	40	D	A	■				
41	B	✓	■	41	D	B	■				
42	B	✓	■	42	A	○	■				
43	A	B	■	43	C	B	■				
44	A	✓	■	44	B	C	■				
45	A	C	■								
46	D	A	■								
47	C	B	■								

MATH – NO CALCULATOR			
Question #	Correct	Your Answer	Difficulty
1	D	○	■
2	A	○	■
3	B	○	■
4	C	B	■
5	C	○	■
6	B	○	■
7	A	○	■
8	B	C	■
9	C	○	■
10	D	○	■
11	A	○	■
12	C	○	■
13	C	○	■
14	C	○	■

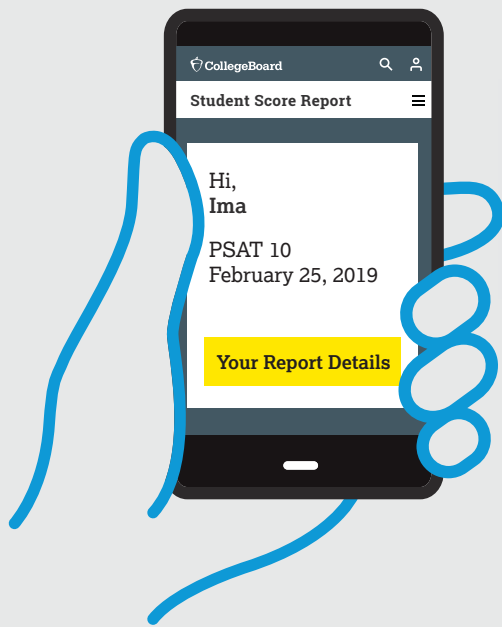
Score Report

13

PSAT™ 10

PSAT™ 10 CollegeBoard

Your Summary Score Report



**Get Your Full
Score Report Online**

psat.org/myscore

Hi, Ima B. Student

School Name: **John F. Kennedy High School**

School Code: **123456**

Grade: **10th Grade**

Student ID: **24068907**

Optional Code: **00**

Access Code: **A02670146P**

College Board ID: **12345678**

The PSAT 10 Sample Score Report (continued)

YOUR SCORE TODAY

Your Total Score

960 | 320 to 1520

You are in the **58th** percentile

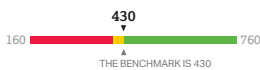



You scored equal to or higher than 58% of students

Your Evidence-Based Reading and Writing Score

430 | 160 to 760

You are in the **39th** percentile




 Your score shows that you're on track to be ready for college.

Your Math Score

530 | 160 to 760

You are in the **76th** percentile



 Your score shows that you're on track to be ready for college.

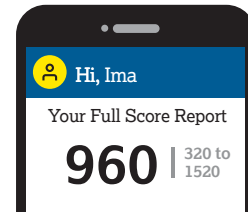
Your Test Scores*

Reading
23 | 8 to 38

Writing and Language
20 | 8 to 38

Math
26.5 | 8 to 38

*Additional detailed scores, like test scores, provide students with a deeper understanding of their performance.



-  Question-Level Detail
-  See Subscores
-  Strengths and Weaknesses
-  Personalized Practice

psat.org/myscore

Go online for your full report

Ima,
this was your score
when you took the test;
it is not a measure of
how far you can **grow!**



The PSAT 10 Sample Score Report (continued)

YOUR PATH TOMORROW

Here's what else is waiting for you online:

1

A link to free personalized practice on Khan Academy

Share your scores with Khan Academy to get your personalized practice.

2

A list of the challenging courses you're ready for

Congrats! Your scores show you're ready to succeed in AP[®] courses.

3

Your customized starter college list

Check out the tools at BigFuture[™] to kick-start your college plans.

Money for College


Our PSAT 10 scholarship partners award over \$255 million a year and they're on the lookout for qualified students.

If you said "yes" to Student Search Service[®] on your PSAT 10 answer sheet, you could be invited to apply for one of their college scholarships.

If you didn't, it's not too late to opt in.

Learn more about each scholarship program and find out how to opt in at psat.org/scholarships.

+\$255
Million
IN COLLEGE SCHOLARSHIPS



© 2019 The College Board. College Board, AP, SAT, and the acorn logo are registered trademarks of the College Board. PSAT is a trademark owned by the College Board. PSAT/NMSQT is a registered trademark of the College Board and National Merit Scholarship Corporation. Visit the College Board on the web: collegeboard.org. Khan Academy is a registered trademark in the United States and other jurisdictions.

Ima B. Student 2019, 10th Grade

The PSAT 10 Sample Score Report (continued)*

Your Question-Level Feedback

QUESTIONS OVERVIEW

READING

47
Total Questions

21
Correct Answers

25
Incorrect Answers

1
Omitted Answers

44
Total Questions

17
Correct Answers

26
Incorrect Answers

1
Omitted Answers

MATH – CALCULATOR

31
Total Questions

15
Correct Answers

14
Incorrect Answers

2
Omitted Answers

MATH – NO CALCULATOR

17
Total Questions

10
Correct Answers

7
Incorrect Answers

0
Omitted Answers

KEY

✓ Correct
 ◊ Omitted
 U Unscorable
 X Multi-Grid/Incorrect

■ Easy Question
 ■ Medium Question
 ■ Hard Question

— Easy Question Missed*

READING

Question #	Correct	Your Answer	Difficulty
1	A	✓	■
2	B	A	■
3	B	✓	■
4	B	A	■
5	C	✓	■
6	D	✓	■
7	B	✓	■
8	A	✓	■
9	D	✓	■
10	A	✓	■
11	D	C	■
12	D	B	■
13	D	A	■
14	A	X	■
15	C	B	■
16	B	C	■
17	D	C	■
18	B	D	■
19	A	✓	■
20	C	✓	■
21	B	D	■
22	D	✓	■
23	B	D	■
24	D	✓	■
25	C	✓	■
26	B	A	■
27	B	C	■
28	A	C	■
29	D	A	■
30	B	A	■
31	D	✓	■
32	A	✓	■
33	C	✓	■
34	A	B	■
35	A	B	■
36	C	◊	■
37	B	C	■
38	C	D	■
39	C	✓	■
40	C	✓	■
41	B	✓	■
42	B	✓	■
43	A	B	■
44	A	✓	■
45	A	C	■
46	D	A	■
47	C	B	■

WRITING AND LANGUAGE

Question #	Correct	Your Answer	Difficulty
1	D	C	■
2	B	✓	■
3	C	D	■
4	C	A	■
5	B	D	■
6	B	X	■
7	A	D	■
8	B	C	■
9	A	B	■
10	D	✓	■
11	D	✓	■
12	B	✓	■
13	C	✓	■
14	C	B	■
15	D	✓	■
16	B	A	■
17	B	D	■
18	A	✓	■
19	B	✓	■
20	C	D	■
21	A	✓	■
22	A	B	■
23	C	B	■
24	D	C	■
25	C	D	■
26	A	✓	■
27	A	D	■
28	B	✓	■
29	D	A	■
30	C	B	■
31	D	✓	■
32	B	✓	■
33	D	✓	■
34	D	B	■
35	D	✓	■
36	B	A	■
37	C	D	■
38	A	✓	■
39	C	✓	■
40	D	A	■
41	D	B	■
42	A	◊	■
43	C	B	■
44	B	C	■

MATH – CALCULATOR

Question #	Correct	Your Answer	Difficulty
1	B	✓	■
2	A	✓	■
3	B	✓	■
4	D	✓	■
5	B	C	■
6	A	✓	■
7	B	✓	■
8	C	B	■
9	A	✓	■
10	D	C	■
11	D	✓	■
12	A	✓	■
13	B	✓	■
14	C	✓	■

Question #	Correct	Your Answer	Difficulty
28	65	60	■
29	0, 12	2	■
30	1368	◊	■
31	85	75	■

Question #	Correct	Your Answer	Difficulty
15	C	A	■
16	B	✓	■
17	D	✓	■
18	B	A	■
19	C	A	■
20	B	✓	■
21	B	C	■
22	D	C	■
23	D	B	■
24	C	◊	■
25	B	A	■
26	D	✓	■
27	D	A	■

MATH – NO CALCULATOR

Question #	Correct	Your Answer	Difficulty
1	D	✓	■
2	A	✓	■
3	B	✓	■
4	C	B	■
5	C	✓	■
6	B	✓	■
7	A	✓	■

Question #	Correct	Your Answer	Difficulty
14	2	0	■
15	90	80	■
16	1	2	■
17	0	✓	■

Question #	Correct	Your Answer	Difficulty
8	B	C	■
9	C	✓	■
10	D	✓	■
11	A	C	■
12	C	✓	■
13	B	A	■

Question #	Correct	Your Answer	Difficulty
14	2	0	■
15	90	80	■
16	1	2	■
17	0	✓	■

Hi, Ima

Your Full Score Report

960 | 320 to 1520

psat.org/myscore

Go online for your full report

Question-Level Detail

See Subscores

Strengths and Weaknesses

Personalized Practice

