
PSAT™ 10

Understanding

Scores

2017



Contact Us

About the College Board

The College Board is a mission-driven not-for-profit organization that connects students to college success and opportunity. Founded in 1900, the College Board was created to expand access to higher education. Today, the College Board's membership is made up of over 6,000 of the world's leading educational institutions and is dedicated to promoting excellence and equity in education. Each year, the College Board helps more than seven million students prepare for a successful transition to college through programs and services in college readiness and college success—including the SAT® and the Advanced Placement Program®. The organization also serves the education community through research and advocacy on behalf of students, educators, and schools. For further information, visit collegeboard.org.

About the PSAT 10

As one of the assessments in the College Board's SAT Suite of Assessments, the PSAT™ 10 is designed to measure the skills and knowledge that current research shows are essential for college and career readiness and success. The PSAT 10 covers the same content areas as the PSAT/NMSQT®. Both the PSAT/NMSQT and the PSAT 10 serve as a check-in on student progress to help pinpoint areas for development. Educational Testing Service (ETS) administers the PSAT 10 for the College Board.

Contacts for Parents and Students

✉ psathelp@info.collegeboard.org

☎ 866-433-7728
+1-212-713-8105 (International)
609-882-4118 (TTY)
8 a.m. to 4 p.m. ET, Mon.–Fri.

General Contacts

📍 PSAT 10
P.O. Box 6720
Princeton, NJ 08541-6720

☎ 610-290-8979

Contacts for Educators*

✉ psat10@info.collegeboard.org

☎ 888-477-PSAT (7728)

for educators only
+1-212-237-1335 (International)
609-882-4118 (TTY)
8 a.m. to 8 p.m. ET, Mon.–Fri.

*If your state provided the assessment as part of a statewide testing initiative, use the contact information provided in your state testing materials.

The **PSAT 10** and the **SAT Suite** of Assessments

What is the SAT Suite of Assessments?

The SAT Suite of Assessments is a group of assessments beginning with the PSAT™ 8/9 (grades 8 and 9), continuing through the PSAT 10 and the PSAT/NMSQT® (grades 10 and 11), and culminating in the SAT (grades 11 and 12). Together, these assessments measure a student's college and career readiness from grades 8–12. The tests reflect the kinds of meaningful, engaging, and challenging work that students find in the best middle and high school courses taught today, creating and sustaining a durable bond between assessment and instruction that provides the backbone of a sound education.

What does the PSAT 10 measure?

The PSAT 10 measures the knowledge and skills that research shows are most essential for college and career readiness and success. The assessment includes the Reading Test, the Writing and Language Test, and the Math Test. A student's scores on the Reading Test and the Writing and Language Test are combined to arrive at a section score for Evidence-Based Reading and Writing. The Math Test score is also reported as a second section score. For complete test specifications, visit sat.org/k12.

How is the PSAT 10 scored?

First, the student's raw score is computed as the number of questions correctly answered. The scores included on score reports are based on raw scores. There's no penalty for guessing, so nothing is deducted for incorrect answers or for unanswered questions.

Next, the raw score is converted to a scaled score of 160 to 760. This conversion process adjusts for slight differences in difficulty among versions of the test and provides a score that is equated, or consistent, across forms. This process ensures that no student receives an advantage or disadvantage from taking a particular form of the test on a particular day; a score of 400 on one test form is equivalent to a score of 400 on another test form. Go to psat.org/resources to see the score conversion table for the 2017 PSAT 10.

How can I use the student score report?

The student score report clearly summarizes the student's current achievement levels and offers guidance and appropriate next steps to increase college and career readiness. As you look through the report with your student, here is some information you will want to share:

Check-in: On Track for College Readiness?

- Grade-level benchmarks show how students are progressing toward college readiness.
- Use benchmark attainment, provided for each section score, to have a conversation with your student about college readiness and the sort of continued work they need to start doing now to prepare for college success.
- If you have a student who is right on track, remind them to continue to take rigorous courses and work hard to stay on track.
- If you have a student who is not meeting the benchmark, connect the student to classroom work that is focused on areas of weakness, and with Khan Academy® to supplement this work.

Evaluate Relative Strengths and Weaknesses:

- Test scores, cross-test scores, and subscores provide an opportunity to evaluate a student's relative strengths and weaknesses and highlight specific opportunities to strengthen the student's college readiness skills.
- Use the red/yellow/green coding on test scores and subscores to evaluate how your student is performing relative to other students who are meeting/exceeding the benchmark.
- Highlight the areas in green as the student's strengths.
- Prioritize the areas that are furthest into the red for additional instruction and deliberate practice.

Define Next Steps — Actions to Support Skills:

The "Your Scores: Next Steps" page identifies the specific skills that the student should address.

- Work with your student to identify activities that could be used to develop each of the skills identified for focus and improvement.
- Encourage your student to go online for more details and to link their College Board account to Khan Academy to strengthen skills and to evaluate progress against the skills listed.
- For further guidance on interpreting score reports, see the Professional Development modules for K–12 educators at sat.org/k12.

Score-Reporting Features

On pages 11–16 of this booklet, you'll find a guide to the score report, followed by a sample score report. The guide includes detailed explanations of the information that students receive about their college readiness skills. Students can access their online reports to obtain more information and guidance, including powerful Khan Academy instruction and practice based on their results.

In addition, k12reports.collegeboard.org, the online reporting portal, offers you an array of powerful tools to assess your students' progress and plan instruction that delivers what they need. The tools include:

- Flexible reports that can be sorted and filtered by key demographics;
- Instructional planning support using test subscores in specific content areas, benchmarks, information for cross-subject tasks, and data for prescribing interventions when students are behind;
- Access to the AP Potential™ tool to pinpoint students who are likely to succeed in more challenging courses.

The PSAT 10 Scores

PSAT 10 Total Scores

The total score shown in the report reflects the combination (addition) of the Evidence-Based Reading and Writing section score (160–760) with the Math section score (160–760). The reported range for the PSAT 10 total score is 320–1520.

Nationally representative percentiles shown in this booklet are derived from a research study.

User group percentiles are derived from students in the 10th grade who took the PSAT/NMSQT or the PSAT 10 administered in 2015–16.

PSAT 10 Section Scores

Your students will receive two section scores, both in the range of 160–760:

- Evidence-Based Reading and Writing
- Math

These scores reflect students' overall performance in each section. The Evidence-Based Reading and Writing section score is a combination of the Reading Test score and the Writing and Language Test score. The Math section score is derived from the Math Test score (including both the Math Test – Calculator and Math Test – No Calculator portions).

PSAT 10 Test Scores and Cross-Test Scores

In addition to the total and section scores, students will see three test scores in the range of 8–38, reflecting performance on the content covered in each of the tests:

- Reading
- Writing and Language
- Math

Students will also see two cross-test scores in the range of 8–38. These scores represent student performance on items across the three tests that fall in the following two domains:

- Analysis in History/Social Studies
- Analysis in Science

PSAT 10 Subscores

Finally, students receive subscores in the range of 1–15 that offer feedback on their performance in the following skill areas:

- Command of Evidence
- Words in Context
- Expression of Ideas
- Standard English Conventions
- Heart of Algebra
- Problem Solving and Data Analysis
- Passport to Advanced Math

Standard Error of Measurement

PSAT 10 scores should be interpreted as ranges rather than points. The standard error of measurement (SEM) indicates that a student who took different forms of the test under identical conditions would be likely to earn scores within the range of the SEM on those different forms. The SEM is 46.25 for the total score, 26.24 for the Evidence-Based Reading and Writing section score, and 38.08 for the Math section score.

Score Scales and Score Changes

How can PSAT 10 scores be used to project SAT scores?

The full SAT Suite—from PSAT 8/9 through the SAT—uses a common score scale for the total (240–1600), section (120–800), and test and cross-test scores. The ranges reported for each assessment reflect grade-level appropriateness within the common scale. Thus, while the total range for the SAT is 400–1600, the total range for the PSAT 10 is 320–1520.

This common score scale means that a student who took the PSAT 10 and received a Math section score of 500 would be expected to also get a 500 on the SAT or the PSAT 8/9 if that student had taken either of those tests on that same day; a score of 500 represents the same level of academic achievement on all three assessments.

This also means that student growth is easy to see across the full suite. If a student takes the PSAT 10 this year and receives a 500 Math section score, and then takes the SAT next year and earns a 550 Math section score, that student has shown a growth of 50 points, which likely resulted from hard work both in and out of school.

Encourage students to focus on the section scores if they are curious about what growth in their scores they can expect to see over the next year. They should look at the set of projected score ranges provided (only in online score reports) for students who reflect typical growth. Of course, a student's individual growth will be shaped by the courses taken and the practice undertaken between assessments.

Subscores are not on a vertical scale, and therefore comparing performance year after year should be done based on relative performance rather than by calculating student growth across tests.

Students who wish to improve their performance on the SAT should follow these guidelines:

- Develop academic skills through challenging coursework.
- Read extensively and develop strong writing skills.
- Engage in deliberate practice in the three math areas that are emphasized the most in the assessments.
- Take practice tests and upload their results to Khan Academy for personalized practice of the skills they need to improve. To learn more, go to collegeboard.org/psatpractice.

Benchmarks and Red/Yellow/Green Performance

What are the PSAT 10 college and career readiness benchmarks?

The SAT Suite offers grade-level benchmarks that can be used to gauge whether students are on track for becoming college ready each year from grade 8 to grade 12. College and career readiness benchmarks represent the section scores on each assessment that students should meet or exceed to be considered on track to be college ready.

The college and career readiness benchmarks are included in assessment reporting to help students understand their level of readiness for college and career training programs. The benchmarks help educators better understand how many and also which students are on track to have the skills necessary for college-entry, credit-bearing courses. Equipped with this information, educators can support students who need extra help while there is still time for improvement. Teachers can also accelerate the progress of students who meet or exceed the benchmarks.

Recommended Uses

College and career readiness benchmarks can help educators:

- Identify students who are on track for success in college and career readiness.
- Identify students who may need extra support while there is still time for improvement.
- Find students who may be ready for more challenging coursework.

College and career readiness benchmarks should not be used to assign academic tracks, to discourage students from pursuing college, or to keep students from participating in challenging courses.

Rather, the benchmarks are to be used to help all students better prepare for life after high school by taking courses that are aligned with their progress thus far and engaging in deep practice of the knowledge and skills that matter most for college.

How are the benchmarks calculated?

The college and career readiness benchmarks for the 2016-17 SAT predict a 75% likelihood of achieving at least a C in a set of first-semester, credit-bearing college courses. The benchmarks are set at the section level, so there is a benchmark for Evidence-Based Reading and Writing and a benchmark for Math. The PSAT 8/9, PSAT 10, PSAT/NMSQT, and SAT benchmarks are determined by observing how students grow from year to year and by adjusting the SAT benchmark by using the average rate of progress.

PSAT 10 College and Career Readiness Benchmarks	
Evidence-Based Reading and Writing	Math
430	480

Percentiles

What additional information is provided to help understand progress toward college readiness?

The student score report provides further context for understanding scores by showing a color-coded bar chart for students' section scores. For students who met or exceeded the benchmark, the score will be in the green portion of the score band. If students did not meet the benchmark but were close (within one year's growth), their score will be found in the yellow portion. Students who score more than a year's growth below the grade-level benchmark will see their score in the red portion of the score band. Additionally, for each of the test scores and subscores, we have provided a color-coded guide to a student's relative strengths and weaknesses. The colors on each of these score scales represent the typical performance of students in their grade who met (green), approached (yellow), or were further away (red) from the benchmark.

Percentile ranks represent the percentage of students who score equal to or below the score the student obtained. For the total scores and the section scores, percentile ranks are provided based on two different reference populations. On both the paper and online score reports, students receive a nationally representative percentile rank. On the online score report, students also receive a user group percentile rank based on typical test takers.

Nationally representative percentiles are derived via a research study sample of U.S. students in the student's grade (10th), weighted to represent all U.S. students in that grade, regardless of whether they typically take the PSAT 10. For example, a student's score in the 75th percentile means that 75% of the nationally representative group of U.S. students in the same grade would have had scores at or below that student's score.

User group percentiles are derived from students in the student's grade (10th) who tested in the fall administration of the PSAT/NMSQT. A student's score in the 75th percentile means that 75% of the user group of U.S. students in the same grade would have had scores at or below that student's score.

Percentiles for Total Scores

Converted Total Score	National Representative Sample	PSAT/NMSQT and PSAT 10 User: National	Converted Total Score	National Representative Sample	PSAT/NMSQT and PSAT 10 User: National	Converted Total Score	National Representative Sample	PSAT/NMSQT and PSAT 10 User: National
1520	99+	99+	1100	82	82	680	3	5
1510	99+	99+	1090	81	81	670	2	4
1500	99+	99+	1080	79	79	660	2	3
1490	99+	99+	1070	78	78	650	1	3
1480	99+	99+	1060	76	76	640	1	2
1470	99+	99+	1050	75	75	630	1	2
1460	99+	99+	1040	73	73	620	1	2
1450	99+	99+	1030	71	72	610	1-	1
1440	99+	99+	1020	69	70	600	1-	1
1430	99+	99+	1010	67	68	590	1-	1
1420	99	99	1000	65	66	580	1-	1
1410	99	99	990	63	65	570	1-	1
1400	99	99	980	62	63	560	1-	1
1390	99	99	970	60	61	550	1-	1
1380	99	99	960	58	59	540	1-	1-
1370	99	99	950	56	57	530	1-	1-
1360	99	99	940	54	55	520	1-	1-
1350	98	98	930	52	53	510	1-	1-
1340	98	98	920	50	51	500	1-	1-
1330	98	98	910	48	49	490	1-	1-
1320	98	98	900	46	47	480	1-	1-
1310	97	97	890	44	45	470	1-	1-
1300	97	97	880	42	43	460	1-	1-
1290	97	97	870	40	40	450	1-	1-
1280	97	97	860	38	38	440	1-	1-
1270	96	96	850	36	36	430	1-	1-
1260	96	96	840	33	34	420	1-	1-
1250	95	95	830	31	32	410	1-	1-
1240	95	95	820	28	30	400	1-	1-
1230	94	94	810	26	27	390	1-	1-
1220	94	94	800	24	25	380	1-	1-
1210	93	93	790	22	23	370	1-	1-
1200	92	92	780	19	21	360	1-	1-
1190	91	92	770	17	19	350	1-	1-
1180	91	91	760	15	17	340	1-	1-
1170	90	90	750	13	15	330	1-	1-
1160	89	89	740	11	13	320	1-	1-
1150	88	88	730	9	11			
1140	87	87	720	8	10	Mean Score	939	933
1130	86	86	710	6	8			
1120	84	85	700	5	7	Standard Deviation	170	176
1110	83	83	690	4	6			

Percentiles for Section Scores

Converted Total Score	Evidence-Based Reading and Writing		Math		Converted Total Score	Evidence-Based Reading and Writing		Math	
	PERCENTILES		PERCENTILES			PERCENTILES		PERCENTILES	
	National Representative Sample	PSAT/NMSQT and PSAT 10 User: National	National Representative Sample	PSAT/NMSQT and PSAT 10 User: National		National Representative Sample	PSAT/NMSQT and PSAT 10 User: National	National Representative Sample	PSAT/NMSQT and PSAT 10 User: National
760	99+	99+	99+	99+	440	43	42	40	42
750	99+	99+	99+	99+	430	39	39	36	39
740	99+	99+	99+	99	420	36	36	31	35
730	99+	99+	99	99	410	32	32	26	29
720	99+	99+	99	99	400	28	28	23	25
710	99	99	99	99	390	24	25	19	22
700	99	99	99	98	380	21	21	15	17
690	99	99	98	98	370	17	18	12	14
680	98	98	98	98	360	13	14	10	11
670	98	97	97	97	350	10	11	7	8
660	97	97	97	97	340	7	8	5	6
650	97	96	96	97	330	5	6	3	5
640	96	95	96	96	320	3	4	2	4
630	95	94	95	95	310	2	3	2	3
620	93	93	95	95	300	1	2	1	2
610	92	91	94	94	290	1-	1	1	2
600	90	90	92	93	280	1-	1	1-	1
590	89	88	91	91	270	1-	1	1-	1
580	87	86	89	89	260	1-	1-	1-	1
570	85	84	86	87	250	1-	1-	1-	1
560	82	81	84	85	240	1-	1-	1-	1
550	79	79	82	82	230	1-	1-	1-	1-
540	76	76	79	80	220	1-	1-	1-	1-
530	73	73	76	77	210	1-	1-	1-	1-
520	70	70	72	73	200	1-	1-	1-	1-
510	66	66	69	71	190	1-	1-	1-	1-
500	63	63	66	69	180	1-	1-	1-	1-
490	59	59	62	65	170	1-	1-	1-	1-
480	56	56	57	60	160	1-	1-	1-	1-
470	53	53	52	55					
460	49	49	49	52					
450	46	46	46	48					
					Mean Score	468	468	470	464
					Standard Deviation	94	98	88	92

2017 PSAT 10 Answer Key

Reading Test		Writing and Language Test		Math Test - No Calculator		Math Test - Calculator	
SECTION 1		SECTION 2		SECTION 3		SECTION 4	
1	C	1	D	1	B	1	C
2	A	2	A	2	C	2	D
3	B	3	C	3	B	3	D
4	B	4	D	4	C	4	B
5	D	5	B	5	C	5	A
6	D	6	D	6	A	6	C
7	B	7	B	7	A	7	B
8	C	8	B	8	D	8	D
9	A	9	C	9	A	9	B
10	D	10	C	10	D	10	A
11	D	11	C	11	B	11	B
12	B	12	B	12	C	12	C
13	A	13	A	13	D	13	C
14	A	14	C	14	4	14	D
15	B	15	A	15	2	15	C
16	B	16	B	16	U	16	B
17	B	17	A	17	20	17	D
18	D	18	A	U = This question will not be scored.		18	A
19	C	19	B			19	B
20	D	20	D	20	A		
21	B	21	C	21	B		
22	B	22	D	22	C		
23	C	23	A	23	A		
24	D	24	B	24	B		
25	B	25	C	25	A		
26	C	26	D	26	A		
27	A	27	B	27	D		
28	D	28	B	28	10		
29	A	29	D	29	12		
30	D	30	A	30	1458		
31	B	31	B	31	211, 212		
32	A	32	D				
33	A	33	C				
34	B	34	A				
35	A	35	D				
36	D	36	D				
37	C	37	D				
38	C	38	C				
39	B	39	D				
40	D	40	C				
41	C	41	C				
42	C	42	A				
43	A	43	B				
44	C	44	B				
45	B						
46	C						
47	D						

Score Conversion

Shows how raw scores are converted into test scores, cross-test scores, and subscores.

Important to note

- A student's section score for the Evidence-Based Reading and Writing section is calculated by adding their Reading Test score to their Writing and Language Test score and multiplying that figure by 10.
- A student's section score for the Math section is calculated by multiplying their Math Test score by 20.

2017 PSAT 10

Raw Score (# of correct answers)	Reading Test Score	Writing and Language Test Score	Math Test Score
47*	38		38
46	38		37.5
45	37		37
44	37	38	36.5
43	36	38	36
42	36	38	35
41	35	37	34
40	35	37	33
39	34	36	32.5
38	33	35	31.5
37	33	34	31
36	32	34	30.5
35	31	33	30
34	30	32	29.5
33	30	31	29
32	29	31	28.5
31	28	30	28.5
30	28	30	28
29	27	29	27.5
28	27	28	27
27	26	28	26.5
26	26	27	26
25	25	27	25.5
24	25	26	25.5
23	24	26	25
22	24	25	24.5
21	23	24	24
20	22	23	23.5
19	22	23	23
18	21	22	22.5
17	21	21	22
16	20	20	21.5
15	19	19	21
14	19	18	20
13	18	18	19.5
12	18	17	19
11	17	16	18.5
10	17	16	17.5
9	16	15	17
8	16	14	16
7	15	14	15
6	14	13	14
5	13	12	13
4	12	12	12
3	11	11	11
2	10	10	10
1	9	9	9
0	8	8	8

* Due to the unscored question (see page 9), the highest possible Raw Score for Math is 47.

The PSAT 10 Score Report

A Case Study: Ima B. Student's PSAT 10 Score Report

Take a look at Ima B. Student's sample score report below and on the next page. Use the corresponding information to help you interpret your student's PSAT 10 Score Report. (Note: The figures shown here are samples and do not necessarily correspond to actual results.)

What Are Ima's Scores?

Ima's Evidence-Based Reading and Writing score is 410 and her Math score is 530. In Evidence-Based Reading and Writing, Ima's score is approaching the benchmark, but she is not quite on track for college readiness. In Math, however, Ima is exceeding the benchmark and is on track. Test scores, cross-test scores, and subscores can give Ima a better understanding of the areas she needs to work on.

What Are Her Score Percentiles?

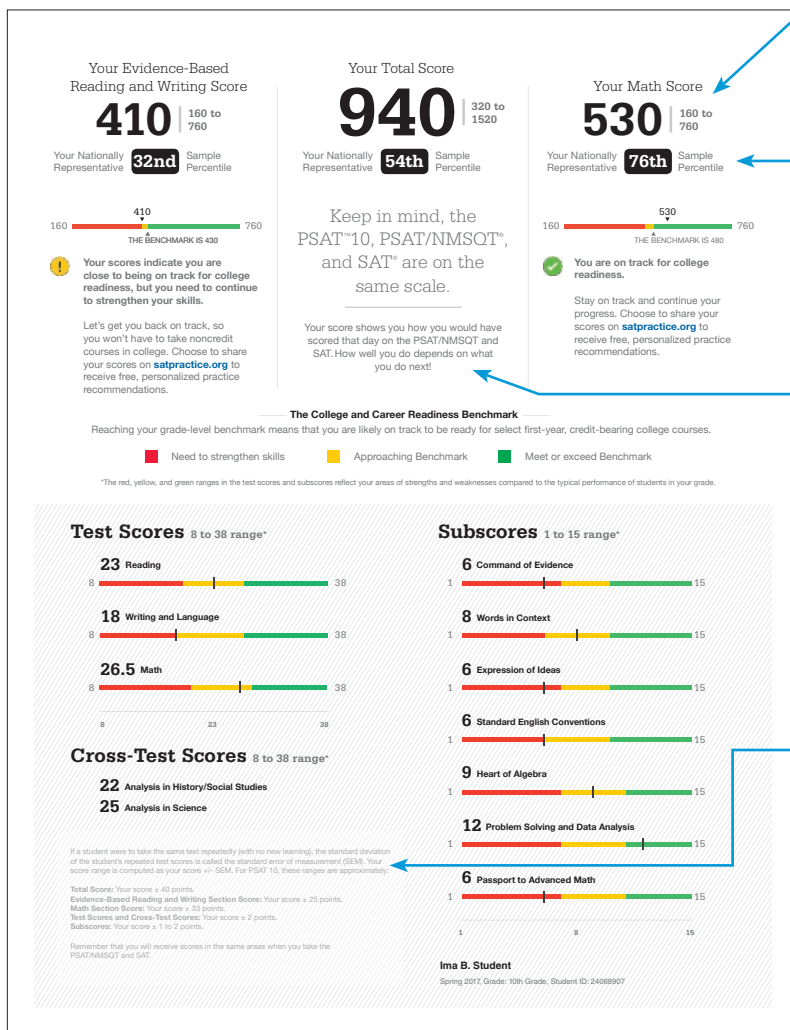
Since Ima is in the 10th grade, the percentiles compare her scores with those of all 10th graders in the nation. In Evidence-Based Reading and Writing, Ima scored as well as or better than 32% of a nationally representative group of sophomores. In Math, she scored as well as or better than 76% of a nationally representative group of sophomores. Additional percentiles are available in Ima's online score report.

How Will Ima Do on the SAT?

The PSAT 10 and the SAT are scored on a common scale; therefore, if Ima had taken the SAT instead of the PSAT 10 on the same test date, she would have received the same score. When Ima takes the SAT, she will likely have had additional learning from school and practice. Her PSAT 10 results can help Ima focus her efforts in high school to be better prepared for the SAT.

What Are Her Score Ranges?

No test measures precisely what someone knows, and many factors can affect results. That is why test makers think of each score as a range that extends from a few points below to a few points above the score earned.



Score Report (Page 1 of 3)

Your Scores: Next Steps

Additional skills and improvement suggestions can be found in your online score report.

Your score indicates that you are already likely able to:

Reading Test

Improve your skills by focusing on the following suggestions:

- Draw reasonable conclusions from somewhat challenging texts
- Describe the overall structure of a somewhat challenging text
- Identify claims and counterclaims explicitly stated in a somewhat challenging passage
- Revise text as needed to improve the exactness or content appropriateness of word choices within somewhat challenging texts



- Draw reasonable inferences and logical conclusions from challenging texts
- Analyze information presented quantitatively in such forms as graphs, tables, and charts and relate that information to information presented in somewhat challenging text
- Determine how the selection of specific words shapes meaning and tone in a challenging passage
- Use a variety of sentence structures to accomplish a rhetorical purpose such as persuading an audience
- Retain or add information or ideas to a piece of text to support claims or points in challenging text

Writing and Language Test

- Revise text as needed to improve the exactness or content appropriateness of word choices within somewhat challenging texts
- Retain or add information or ideas to a piece of a text to support claims or points in somewhat challenging text
- Revise somewhat challenging text to ensure that information is presented in the most logical order
- Revise text as needed to improve the exactness or content appropriateness of word choices within somewhat challenging texts



- Retain or add information or ideas to a piece of text to support claims or points in challenging text
- Use a variety of sentence structures to accomplish a rhetorical purpose such as persuading an audience
- Revise text as needed to improve the exactness or content appropriateness of word choices within challenging texts
- Retain or add information or ideas to a piece of text to support claims or points in challenging text
- Use a variety of sentence structures to accomplish a rhetorical purpose such as persuading an audience

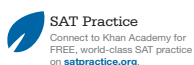
Math Test

- Interpret a linear inequality in one variable with rational coefficients that represents a context. Select the equation of a line of best fit and interpret the slope and intercept of the line in the context of the situation (when a linear model is appropriate)
- Interpret sample statistics understanding and use margin of error
- Solve and interpret a quadratic function or equation that represents a context and requires multiple steps
- Calculate and interpret frequency distributions using tables and other representational methods



- Determine how a graph may be affected by a change to its equation
- Determine the value of a constant or coefficient for an equation with no solution or infinitely many solutions
- Using a specified model, make a prediction and compare the predicted values with the actual values in the data set
- Within a context, compare the center of two separate data sets with different spreads
- Determine whether two events are independent given their probabilities
- Use a variety of sentence structures to accomplish a rhetorical purpose such as persuading an audience

Get more next steps online
studentscores.collegeboard.org



AP and Course Work
See which AP courses may be good matches for you.



Register for the SAT
Select an SAT test date, and register for it now.

Ima B. Student Spring 2017, Grade: 10th Grade

How Can Ima Improve Her Academic Skills?

"Your Scores: Next Steps" are based on Ima's test scores, and on the general skills that similarly performing students understand. Ima can see which skills she performed well on and those on which she needs to improve. When she goes online and logs in to the full report, she can see additional skills and improvement steps. Ima can also link her account to Khan Academy for personalized practice recommendations.

What Are Ima's Next Steps?

Under **Get more next steps online**, Ima is directed to studentscores.collegeboard.org to learn how to prepare for the SAT and to see her potential for AP[®] coursework.

Score Report (Page 2 of 3)

When Should Ima Take the SAT?

As a sophomore, Ima should begin planning when she will take the SAT. Most students take the SAT for the first time in their junior year. By planning now, Ima can ensure that she has adequate time to practice for the SAT. She can register for the test and take advantage of practice resources by visiting studentscores.collegeboard.org.

What Can We Learn from Ima's Answers?

The score report is designed to be used with the student's PSAT 10 test booklet. It lists all of Ima's answers and allows her to see the correct answer and difficulty level for each question. Ima can use her online score report to review the questions she answered incorrectly or omitted and see detailed explanations of why her responses were correct or incorrect.

Your Question-Level Feedback

Writing and Language

Question #	Correct	Your Answer	Difficulty	Subscore	Cross-Test Score
1	D	C	Medium	SEC	
2	B	A	Easy	EOA	HSS
3	C	D	Medium	SEC	
4	C	A	Medium	SEC	
5	B	D	Medium	SEC	
6	B	D	Medium	COE, EOA	HSS
7	A	D	Medium	WVC, EOA	HSS
8	B	C	Medium	EOA	HSS
9	A	B	Medium	WVC, EOA	HSS
10	A	C	Medium	SEC	
11	D	A	Medium	COE, EOA	HSS
12	B	A	Medium	SEC	
13	C	A	Medium	SEC	
14	C	B	Medium	SEC	
15	D	A	Medium	WVC, EOA	SEC
16	B	A	Medium	SEC	
17	B	D	Medium	SEC	
18	A	D	Medium	EOA	SCI
19	B	C	Medium	EOA	SCI
20	C	D	Medium	COE, EOA	SEC
21	A	A	Medium	COE, EOA	SCI
22	A	B	Medium	WVC, EOA	SCI
23	C	B	Medium	WVC, EOA	SCI
24	D	C	Medium	SEC	
25	C	D	Medium	SEC	
26	B	A	Medium	EOA	HSS
27	B	C	Medium	EOA	HSS
28	B	A	Medium	COE, EOA	HSS
29	D	A	Medium	WVC, EOA	HSS
30	C	B	Medium	SEC	
31	D	A	Medium	EOA	HSS
32	B	D	Medium	SEC	
33	C	A	Medium	SEC	
34	D	B	Medium	EOA	HSS
35	D	A	Medium	SEC	
36	C	A	Medium	EOA	HSS
37	C	D	Medium	COE, EOA	HSS
38	A	A	Medium	SEC	
39	C	A	Medium	SEC	
40	D	A	Medium	WVC, EOA	HSS
41	B	B	Medium	SEC	
42	B	A	Medium	COE, EOA	HSS
43	C	B	Medium	COE, EOA	HSS
44	B	C	Medium	WVC, EOA	HSS
45	A	A	Medium	SEC	
46	D	A	Medium	COE, EOA	HSS
47	C	B	Medium	SEC	

Math Test – Calculator

Question #	Correct	Your Answer	Difficulty	Subscore	Cross-Test Score
1	B	A	Medium	PSD	HSS
2	A	A	Medium	HOA	HSS
3	B	B	Medium	PSD	SCI
4	D	A	Medium	HOA	HSS
5	B	D	Medium	PSD	HSS
6	A	A	Medium	PSD	HSS
7	B	A	Medium	PSD	HSS
8	C	A	Medium	PSD	HSS
9	A	B	Medium	PAM	SCI
10	D	C	Medium	HOA	HSS
11	D	A	Medium	PSD	HSS
12	A	A	Medium	PSD	HSS
13	B	A	Medium	PSD	HSS
14	C	A	Medium	PSD	SCI
15	C	A	Medium	PSD	HSS
16	B	A	Medium	PSD	HSS
17	D	A	Medium	PSD	HSS
18	B	A	Medium	PSD	HSS
19	C	A	Medium	PSD	HSS
20	B	A	Medium	PSD	HSS
21	B	A	Medium	PSD	HSS
22	D	C	Medium	PAM	SCI
23	D	B	Medium	PAM	SCI
24	C	B	Medium	PAM	SCI
25	B	A	Medium	PAM	SCI
26	D	A	Medium	PAM	SCI
27	D	A	Medium	PAM	SCI
28	D	A	Medium	PAM	SCI
29	D	A	Medium	PAM	SCI
30	1368				
31	85				

Math Test – No Calculator

Question #	Correct	Your Answer	Difficulty	Subscore	Cross-Test Score
1	D	B	Medium	PAM	SCI
2	A	A	Medium	PAM	SCI
3	B	A	Medium	PAM	SCI
4	C	B	Medium	PAM	SCI
5	C	B	Medium	HOA	HSS
6	B	A	Medium	HOA	HSS
7	A	A	Medium	HOA	HSS
8	B	A	Medium	HOA	HSS
9	C	A	Medium	HOA	HSS
10	D	A	Medium	HOA	HSS
11	A	A	Medium	PAM	SCI
12	C	B	Medium	PAM	SCI
13	B	A	Medium	PAM	SCI
14	2				
15	90				
16	1				
17	0				

Subscore
COE Command of Evidence
EOA Expression of Ideas
SEC Standard English Conventions
HOA Heart of Algebra
PSD Problem Solving and Data Analysis
PAM Passport to Advanced Math

Key:
✓ Correct
○ Omitted
U Unscorable
Easy
Medium
Hard

Cross-Test Score:
HSS Analysis in History/Social Studies
SCI Analysis in Science

Ima B. Student Spring 2017, Grade: 10th Grade

Score Report (Page 3 of 3)

Access Code
A02870140P
See the questions, and the answer explanations, online
studentscores.collegeboard.org

© 2017 The College Board. College Board, AP SAT, and the acorn logo are registered trademarks of the College Board. PSAT is a trademark owned by the College Board. PSAT/NMSQT is a registered trademark of the College Board and National Merit Scholarship Corporation. Visit the College Board on the web: collegeboard.org.
Khan Academy is a registered trademark in the United States and other jurisdictions.

The PSAT 10 Sample Score Report

Hi, Ima B. Student

School Name: John F. Kennedy High School, School Code: 123456
Spring 2017, Grade: 10th Grade
Student ID: 24068907
Optional Code: 00
Access Code: A02670146P

PSAT™ 10

 CollegeBoard

Your Score Report

Get your full report online
studentscores.collegeboard.org

Access Code **A02670146P**



SAT® Practice

Connect to Khan Academy® for
FREE, world-class SAT practice
on satpractice.org.



AP® and Course Work

See which AP courses may
be good matches for you.



Register for the SAT

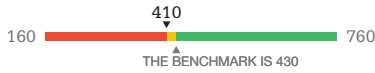
Select an SAT test date, and
register for it now.

The PSAT 10 Sample Score Report, cont.

Your Evidence-Based Reading and Writing Score

410 | 160 to 760

Your Nationally Representative **32nd** Sample Percentile



! Your scores indicate you are close to being on track for college readiness, but you need to continue to strengthen your skills.

Let's get you back on track, so you won't have to take noncredit courses in college. Choose to share your scores on satpractice.org to receive free, personalized practice recommendations.

Your Total Score

940 | 320 to 1520

Your Nationally Representative **54th** Sample Percentile

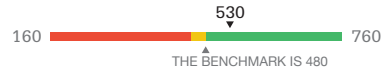
Keep in mind, the PSAT™10, PSAT/NMSQT®, and SAT® are on the same scale.

Your score shows you how you would have scored that day on the PSAT/NMSQT and SAT. How well you do depends on what you do next!

Your Math Score

530 | 160 to 760

Your Nationally Representative **76th** Sample Percentile



✓ You are on track for college readiness.

Stay on track and continue your progress. Choose to share your scores on satpractice.org to receive free, personalized practice recommendations.

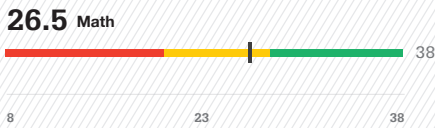
The College and Career Readiness Benchmark

Reaching your grade-level benchmark means that you are likely on track to be ready for select first-year, credit-bearing college courses.

■ Need to strengthen skills ■ Approaching Benchmark ■ Meet or exceed Benchmark

*The red, yellow, and green ranges in the test scores and subscores reflect your areas of strengths and weaknesses compared to the typical performance of students in your grade.

Test Scores 8 to 38 range*



Cross-Test Scores 8 to 38 range*

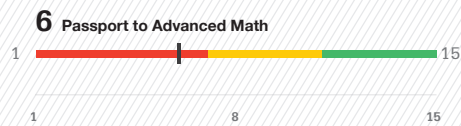
22 Analysis in History/Social Studies
25 Analysis in Science

If a student were to take the same test repeatedly (with no new learning), the standard deviation of the student's repeated test scores is called the standard error of measurement (SEM). Your score range is computed as your score +/- SEM. For PSAT 10, these ranges are approximately:

Total Score: Your score ± 40 points.
Evidence-Based Reading and Writing Section Score: Your score ± 25 points.
Math Section Score: Your score ± 33 points.
Test Scores and Cross-Test Scores: Your score ± 2 points.
Subscores: Your score ± 1 to 2 points.

Remember that you will receive scores in the same areas when you take the PSAT/NMSQT and SAT.

Subscores 1 to 15 range*



Ima B. Student

Spring 2017, Grade: 10th Grade, Student ID: 24068907

The PSAT 10 Sample Score Report, cont.

Your Scores: Next Steps

Additional skills and improvement suggestions can be found in your online score report.

Your score indicates that you are already likely able to:

Reading Test

Improve your skills by focusing on the following suggestions:

- Draw reasonable conclusions from somewhat challenging texts
- Describe the overall structure of a somewhat challenging text
- Identify claims and counterclaims explicitly stated in a somewhat challenging passage
- Revise text as needed to improve the exactness or content appropriateness of word choices within somewhat challenging texts



- Draw reasonable inferences and logical conclusions from challenging texts
- Analyze information presented quantitatively in such forms as graphs, tables, and charts and relate that information to information presented in somewhat challenging text
- Determine how the selection of specific words shapes meaning and tone in a challenging passage
- Use a variety of sentence structures to accomplish a rhetorical purpose such as persuading an audience
- Retain or add information or ideas to a piece of text to support claims or points in challenging text

Writing and Language Test

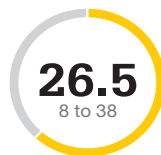
- Revise text as needed to improve the exactness or content appropriateness of word choices within somewhat challenging texts
- Retain or add information or ideas to a piece of text to support claims or points in somewhat challenging text
- Revise somewhat challenging text to ensure that information is presented in the most logical order
- Revise text as needed to improve the exactness or content appropriateness of word choices within somewhat challenging texts



- Retain or add information or ideas to a piece of text to support claims or points in challenging text
- Use a variety of sentence structures to accomplish a rhetorical purpose such as persuading an audience
- Revise text as needed to improve the exactness or content appropriateness of word choices within challenging texts
- Retain or add information or ideas to a piece of text to support claims or points in challenging text
- Use a variety of sentence structures to accomplish a rhetorical purpose such as persuading an audience

Math Test

- Interpret a linear inequality in one variable with rational coefficients that represents a context. Select the equation of a line of best fit and interpret the slope and intercept of the line in the context of the situation (when a linear model is appropriate)
- Interpret sample statistics understanding and use margin of error
- Solve and interpret a quadratic function or equation that represents a context and requires multiple steps
- Calculate and interpret frequency distributions using tables and other representational methods



- Determine how a graph may be affected by a change to its equation
- Determine the value of a constant or coefficient for an equation with no solution or infinitely many solutions
- Using a specified model, make a prediction and compare the predicted values with the actual values in the data set
- Within a context, compare the center of two separate data sets with different spreads
- Determine whether two events are independent given their probabilities
- Use a variety of sentence structures to accomplish a rhetorical purpose such as persuading an audience

Get more next steps online

studentscores.collegeboard.org



SAT Practice

Connect to Khan Academy for FREE, world-class SAT practice on satpractice.org.



AP and Course Work

See which AP courses may be good matches for you.



Register for the SAT

Select an SAT test date, and register for it now.

Ima B. Student Spring 2017, Grade: 10th Grade

The PSAT 10 Sample Score Report, cont.

Your Question-Level Feedback

Reading

Question #	Correct	Your Answer	Difficulty	Subscore	Cross-Test Score
1	A	✓	■ ■ ■		
2	B	A	■ ■ ■	COE	
3	B	A	■ ■ ■		
4	B	✓	■ ■ ■	WIC	
5	C	A	■ ■ ■		
6	D	✓	■ ■ ■		
7	B	○	■ ■ ■	COE	
8	A	✓	■ ■ ■	WIC	
9	D	✓	■ ■ ■	WIC	
10	A	C	■ ■ ■		HSS
11	D	C	■ ■ ■	WIC	HSS
12	D	B	■ ■ ■	WIC	HSS
13	D	A	■ ■ ■	COE	HSS
14	A	C	■ ■ ■		HSS
15	C	B	■ ■ ■	COE	HSS
16	B	C	■ ■ ■		HSS
17	D	C	■ ■ ■		HSS
18	B	D	■ ■ ■		HSS
19	A	✓	■ ■ ■	SCI	
20	C	✓	■ ■ ■	SCI	
21	B	D	■ ■ ■	COE	SCI
22	D	✓	■ ■ ■		SCI
23	B	✓	■ ■ ■		SCI
24	D	✓	■ ■ ■	WIC	SCI
25	C	✓	■ ■ ■	WIC	SCI
26	B	✓	■ ■ ■		SCI
27	B	C	■ ■ ■		SCI
28	A	C	■ ■ ■	COE	SCI
29	D	✓	■ ■ ■	WIC	HSS
30	B	A	■ ■ ■		HSS
31	D	✓	■ ■ ■	COE	HSS
32	A	✓	■ ■ ■		HSS
33	C	✓	■ ■ ■	COE	HSS
34	A	B	■ ■ ■	WIC	HSS
35	A	B	■ ■ ■		HSS
36	C	A	■ ■ ■		HSS
37	B	C	■ ■ ■		HSS
38	C	D	■ ■ ■		HSS
39	C	✓	■ ■ ■		SCI
40	C	✓	■ ■ ■		SCI
41	B	✓	■ ■ ■		SCI
42	B	○	■ ■ ■	COE	SCI
43	A	B	■ ■ ■		SCI
44	A	✓	■ ■ ■	WIC	SCI
45	A	✓	■ ■ ■		SCI
46	D	A	■ ■ ■	COE	SCI
47	C	B	■ ■ ■		SCI

Writing and Language

Question #	Correct	Your Answer	Difficulty	Subscore	Cross-Test Score
1	D	C	■ ■ ■	SEC	
2	B	✓	■ ■ ■	EOI	HSS
3	C	D	■ ■ ■	SEC	
4	C	A	■ ■ ■	EOI	HSS
5	B	D	■ ■ ■	SEC	
6	B	D	■ ■ ■	COE, EOI	HSS
7	A	D	■ ■ ■	WIC, EOI	HSS
8	B	C	■ ■ ■	EOI	HSS
9	A	B	■ ■ ■	WIC, EOI	HSS
10	D	✓	■ ■ ■	SEC	
11	D	✓	■ ■ ■	COE, EOI	HSS
12	B	✓	■ ■ ■		
13	C	✓	■ ■ ■	SEC	
14	C	B	■ ■ ■	SEC	
15	D	✓	■ ■ ■	WIC, EOI	SCI
16	B	A	■ ■ ■	SEC	
17	B	D	■ ■ ■	SEC	
18	A	○	■ ■ ■	EOI	SCI
19	B	C	■ ■ ■	EOI	SCI
20	C	D	■ ■ ■	COE, EOI	SCI
21	A	✓	■ ■ ■	COE, EOI	SCI
22	A	B	■ ■ ■	WIC, EOI	SCI
23	C	B	■ ■ ■	WIC, EOI	SCI
24	D	C	■ ■ ■	SEC	
25	C	D	■ ■ ■	SEC	
26	A	○	■ ■ ■	COE, EOI	
27	A	✓	■ ■ ■	EOI	
28	B	✓	■ ■ ■	COE, EOI	
29	D	✓	■ ■ ■	WIC, EOI	
30	C	B	■ ■ ■	SEC	
31	D	A	■ ■ ■	EOI	
32	B	○	■ ■ ■	SEC	
33	D	✓	■ ■ ■	SEC	
34	D	B	■ ■ ■	EOI	
35	D	✓	■ ■ ■	SEC	
36	B	A	■ ■ ■	EOI	
37	C	D	■ ■ ■	COE, EOI	
38	A	✓	■ ■ ■	SEC	
39	C	✓	■ ■ ■	SEC	
40	D	A	■ ■ ■	WIC, EOI	
41	D	B	■ ■ ■	SEC	
42	A	C	■ ■ ■	SEC	
43	C	B	■ ■ ■	COE, EOI	
44	B	C	■ ■ ■	WIC, EOI	

Math Test – Calculator

Question #	Correct	Your Answer	Difficulty	Subscore	Cross-Test Score
1	B	✓	■ ■ ■	PSD	HSS
2	A	✓	■ ■ ■	HOA	
3	B	✓	■ ■ ■	PSD	SCI
4	D	✓	■ ■ ■	HOA	
5	B	C	■ ■ ■	PSD	
6	A	✓	■ ■ ■	PSD	
7	B	✓	■ ■ ■	PSD	
8	C	✓	■ ■ ■	PSD	
9	A	○	■ ■ ■	PAM	
10	D	C	■ ■ ■	HOA	
11	D	✓	■ ■ ■	PSD	HSS
12	A	✓	■ ■ ■	PSD	
13	B	✓	■ ■ ■	PSD	
14	C	✓	■ ■ ■	PSD	SCI

Question #	Correct	Your Answer	Difficulty	Subscore	Cross-Test Score
15	C	✓	■ ■ ■		
16	B	✓	■ ■ ■	PSD	HSS
17	D	✓	■ ■ ■	PSD	
18	B	A	■ ■ ■	PSD	HSS
19	C	A	■ ■ ■	HOA	
20	B	D	■ ■ ■	PAM	
21	B	✓	■ ■ ■	HOA	
22	D	C	■ ■ ■	PAM	
23	D	B	■ ■ ■	HOA	SCI
24	C	B	■ ■ ■	PAM	SCI
25	B	A	■ ■ ■	PSD	SCI
26	D	○	■ ■ ■	PAM	
27	D	A	■ ■ ■	HOA	

Question #	Correct	Your Answer	Difficulty	Subscore	Cross-Test Score
28	65	60	■ ■ ■	HOA	
29	0, 12	2	■ ■ ■	PAM	
30	1368	✓	■ ■ ■	PSD	HSS
31	85	✓	■ ■ ■	PSD	HSS

Math Test – No Calculator

Question #	Correct	Your Answer	Difficulty	Subscore	Cross-Test Score
1	D	B	■ ■ ■	PAM	
2	A	✓	■ ■ ■	PAM	SCI
3	B	A	■ ■ ■	PAM	
4	C	B	■ ■ ■	PAM	
5	C	✓	■ ■ ■	HOA	
6	B	✓	■ ■ ■	HOA	SCI
7	A	✓	■ ■ ■	HOA	

Question #	Correct	Your Answer	Difficulty	Subscore	Cross-Test Score
8	B	✓	■ ■ ■	HOA	
9	C	✓	■ ■ ■	HOA	
10	D	✓	■ ■ ■	HOA	HSS
11	A	✓	■ ■ ■		
12	C	B	■ ■ ■	PAM	
13	B	A	■ ■ ■	PAM	

Question #	Correct	Your Answer	Difficulty	Subscore	Cross-Test Score
14	2	0	■ ■ ■	HOA	
15	90	80	■ ■ ■	HOA	
16	1	2	■ ■ ■	PAM	
17	0	1	■ ■ ■	PAM	

Subscore

- COE Command of Evidence
- WIC Words in Context
- EOI Expression of Ideas
- SEC Standard English Conventions
- HOA Heart of Algebra
- PSD Problem Solving and Data Analysis
- PAM Passport to Advanced Math

Key:

- ✓ Correct
- Omitted
- U Unscorable
- ■ ■ Easy
- ■ ■ Medium
- ■ ■ Hard

Cross-Test Score:

- HSS Analysis in History/Social Studies
- SCI Analysis in Science

Access Code
A02670146P

See the questions, and the answer explanations, online at studentscores.collegeboard.org

© 2017 The College Board. College Board, AP, SAT, and the acorn logo are registered trademarks of the College Board. PSAT is a trademark owned by the College Board. PSAT/NMSQT is a registered trademark of the College Board and National Merit Scholarship Corporation. Visit the College Board on the web: collegeboard.org

Khan Academy is a registered trademark in the United States and other jurisdictions.

Ima B. Student Spring 2017, Grade: 10th Grade

© 2017 The College Board. College Board, Advanced Placement Program, AP, SAT, and the acorn logo are registered trademarks of the College Board. AP Potential and PSAT are trademarks owned by the College Board. PSAT/NMSQT is a registered trademark of the College Board and National Merit Scholarship Corporation. For more information visit the College Board on the web: collegeboard.org.

Khan Academy is a registered trademark in the United States and other jurisdictions.
00689-002 160041383

